

AngelEye™

Optical Smoke Alarm

User Manual

SA700-AE-UK

www.angeleye.com



0086
0086-CPR-597993
Smoke alarm devices
EN 14604:2005
DOP:13/02



BS EN 14604: 2005
Licence No: KM597992

GN3563R1

SA700-AE-UK Optical Smoke Alarm



A Sprue Brand

Sprue Safety Products Ltd.

Vanguard Centre, Coventry CV4 7EZ UK

Technical Support: **0800 141 2561** / EIRE dial **1-800 523171**

Email: **technicalsupport@sprue.com**

Web: **www.sprue.com**



CONTENTS

Features	4	Battery Replacement	8
Positioning	4	Troubleshooting.	9
Installation.	6	Maintenance.	10
Alarm Test	7	Disposal	10
Alarm Pause.	8	Warranty.	11

Note: This user manual is also available in large text and other formats. Please email: **technicalsupport@sprue.com** or call **0800 141 2561** for further information.

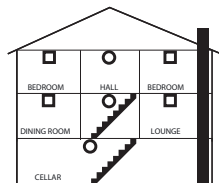
FEATURES

- Battery Operated.
- Operating Light (RED) - flashes approximately every 45 seconds confirming unit is powered.
- Low Battery Warning - unit 'beeps' approximately every 45 seconds for at least 30 days when the battery needs replacing.
- Low Battery Warning Silence - silence the low battery chirp for 10 hours.
- Alarm Pause - silence your smoke alarm by momentarily pressing the test button, ideal for nuisance alarms.
- Sensitivity Test Button - test sensitivity, circuitry, battery, horn.
- Loud 85 Decibel Piezo Electric Alarm - automatically resets when hazardous condition has passed.
- Easy Installation - fixings supplied.

POSITIONING

WARNING: Your AngelEye smoke alarm can be installed into a new build property as additional protection to an existing smoke detection system only. It cannot be used as a substitute for a hard wired system as required in new build properties. In this

type of property the building regulations require alarms to be interlinked. You can obtain further information from your local fire service or building control department at your local council offices. These sources generally provide advice on new builds or projects that require planning permission. Your smoke alarm typically meets the minimum requirements for family living units in existing buildings, as long as at least one unit is installed on each floor/level of your property. In order to achieve the earliest fire warning, we recommend that a smoke alarm is fitted in all rooms where the temperature is normally between 4°C (40°F) and 38°C (100°F).



EXISTING HOMES

- MINIMUM RECOMMENDATIONS
- RECOMMENDED FOR ADDITIONAL PROTECTION

NOTE: Kitchens should be covered by a self contained heat detector.

WARNING: The alarm positions shown are based on typical homes. Construction and layout of individual dwellings will vary, so this should be regarded only as a

guide. Check with your local fire station for further guidance.

Multi-family or mixed occupant residence (Tenancy building, student accommodation)

Your smoke alarm can be used in individual flats and bedsits, providing the same conditions are met as for a single-family residence. However, there must already be a primary fire detection system that meets regulatory requirements for common areas such as lobbies and hallways.

As a minimum, smoke alarms should be located between sleeping areas and potential sources of fire such as living rooms and kitchens. In single storey homes, a smoke alarm should be installed in the hallway, as close as possible to the living accommodation. In single storey homes with two separate sleeping areas, a minimum of two smoke alarms is required, one outside each sleeping area. In multi-level or split level homes, as a minimum a smoke alarm should be installed on the ground floor between the staircase and any rooms in which a fire might start and on each storey in circulation areas which form part of the escape route (normally hallways and landings).

Install smoke alarms in circulation areas at a distance no greater than 7.5m from

the farthest wall, no greater than 7.5m from a door to any room in which a fire might start and no greater than 7.5m from the next smoke alarm. If it is necessary to place a smoke alarm on a wall, always locate the detection element of the alarm 150mm to 300mm (6 to 12 inches) below the ceiling, and the bottom of the alarm above the level of doors and other openings. In rooms with sloped ceilings install smoke alarms 900mm (3 feet) from the highest point of the ceiling. 'Dead air' at the peak of a ceiling may prevent smoke from reaching the alarm in time to provide an early warning.

Institutions and Hotels

This includes motels, hospitals, day care facilities, long-term health care facilities, boarding houses and dormitories. Your SA700-AE-UK smoke alarm can be used in individual sleeping / resident rooms, providing the same conditions are met as for a single-family residence. However, there must already be a primary fire detection system that meets regulatory requirements for common areas such as lobbies and hallways. Use of the SA700-AE-UK smoke alarm in common areas may not provide sufficient fire warning to residents or meet regulatory requirements.

Commercial and Industrial Premises

This smoke alarm is not intended for any non-residential, commercial or industrial application, nor for any other purpose than described above.

Mobile Homes and Caravans

This smoke alarm is suitable for use in mobile homes and caravans. In caravans:

1. The preferred position for fitting the smoke alarm is horizontally on the ceiling in the living area. Avoid proximity to the kitchen.
2. An additional smoke alarm may be fitted in one or more bedrooms.
3. DO NOT locate in kitchen or bathroom area. Cooking fumes and high humidity can trigger nuisance alarms.
4. DO NOT locate smoke alarms close to exhaust fans or air conditioning units, which could draw smoke away from the alarm.

In mobile homes:

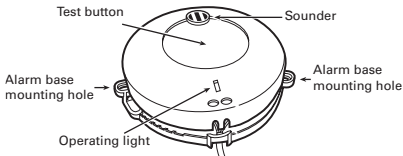
1. If only one smoke alarm is to be fitted, it should be located horizontally on the ceiling, either in the living room or the hall, but not in the proximity of either kitchen or bathroom.
2. Additional alarms can be fitted in bedrooms.
3. DO NOT locate alarm close to exhaust fans or air conditioning.

INSTALLATION

4. Separate the alarm from the mounting plate. This may require you to turn the alarm clockwise while holding the base plate.

WARNING: do not screw the base plate of the alarm to it's mounting surface with the alarm fitted to it. Dust from the fitting process could contaminate this very sensitive device.

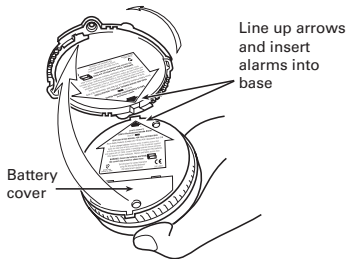
5. Locate the base plate in your chosen position and mark the position of the mounting holes. Drill the holes using a 4.75 mm drill. Insert the anchor plugs and screw the base plate to the chosen position. **DO NOT OVER-TIGHTEN THE SCREWS.** this will distort the base plate.



6. Fitting/Replacing the batteries:

a. Undo the screw and remove the battery access door from the back of the alarm.

When alarm is located on base unit, twist in this direction to lock



Fit two new AAA (LR03) batteries (supplied with a new alarm) in the battery bay making sure they are fitted the correct way round by referring to the diagram on the back of the alarm. Allow ten seconds before testing the alarm.

WARNING: USE ONLY DURACELL MN2400 OR GP 24AU BATTERIES OR ENERGIZER LROJ, OTHER BATTERIES MAY BE INADEQUATE.

b. Refit the battery access door.

7. Line up the arrow on the back of the alarm with the arrow inside the base plate and inset the alarm. Once the

alarm is inside the base plate twist it anti-clockwise to lock it into place.

8. Test the alarm.

ALARM TEST

1. Press and release the test button to test alarm. The alarm should sound three times.



2. After testing check that the red light flashes approximately every 40 seconds.

3. Test the alarm once a week to ensure correct operation.

Storage in low humidity, and certain transportation conditions, may cause electrostatic charges to build up in the alarm system housing. Although harmless, they may increase the length of time that the horn sounds upon battery insertion or test button operation. The condition may be cleaned by gently wiping the outside of the plastic cover with a clean, damp cloth.

WARNING: The electronic test button provides a full test of the unit's functionality. DO NOT try to test the alarm with a naked flame as this may present a potential fire hazard in itself and contaminate the alarm.

Alarm Warning Sounds

● ● ● ● 1 SEC ● ● ● ●

Full smoke alarm with flashing LED.

● 45 SEC ●

One beep every 45 seconds indicates low batteries.

● ● 45 SEC ● ●

Two beeps every 45 seconds indicates a fault.

● 12 SEC ●

One beep every 12 seconds indicates that the test button is jammed on.

ALARM PAUSE

Abnormal air conditions may cause the highly sensitive smoke alarm to give a 'false' alarm. Do not disconnect the batteries. If no fire is apparent, ventilate the room and operate the 'Alarm Pause' feature by pressing the test button.

WARNING: If there is any question as to the cause of an alarm, always assume that this is due to an actual fire and follow your fire emergency plans. Do not assume the alarm is a nuisance alarm.

BATTERY REPLACEMENT

Your alarm requires two AAA (LR03) alkaline batteries. Under normal use, the batteries should last approximately one year.

- Low Battery Warning - alarm beeps every 45 seconds for up to 30 days when the battery needs replacing.
- Low Battery Warning Silence - low battery warnings often start at night. Silence the audible warning for ten hours by pressing the test button, thus avoiding removing the batteries. Change the batteries the following day. The red LED flashes twice every 45 seconds to remind you that the low battery warning has been silenced.

IMPORTANT: Test alarm using test facility whenever batteries are replaced.

TROUBLESHOOTING

Problem	Solution
Your smoke alarm does not sound during testing	<ul style="list-style-type: none">• If testing immediately after first activating the alarm or replacing the batteries, you should allow a few seconds for the alarm to settle before testing.• Make sure you push the centre of the test button firmly.• If the alarm has been recently fitted and it still fails to self test then contact Technical Support on: 0800 141 2561 or e-mail: technicalsupport@sprue.com.
The operating light remains steadily on or off	<ul style="list-style-type: none">• Inspect for obvious damage.• Check the unit contains the recommended battery type and that it is properly connected.• If in doubt, contact Technical Support on: 0800 141 2561 or e-mail: technicalsupport@sprue.com.
The alarm beeps twice every 45 seconds	<ul style="list-style-type: none">• This indicates a fault with the alarm.• Inspect for obvious damage.• Check the unit contains the recommended battery type and that it is properly connected.• If in doubt, contact Technical Support on: 0800 141 2561 or e-mail: technicalsupport@sprue.com.
Your smoke alarm beeps every 45 seconds	<ul style="list-style-type: none">• This indicates that the battery is low and needs replacing.• Refer to the 'Battery Replacement' section of this manual.

MAINTENANCE

Your smoke alarm has been designed to be as maintenance-free as possible, however there are several things you must do to keep it working properly.

CAUTION: Your smoke alarm is a sealed electrical device and no attempt should be made to open the case. Attempting to open the case will invalidate your warranty.

Testing

Test your smoke alarm once every week, see 'Alarm Test'.

Cleaning

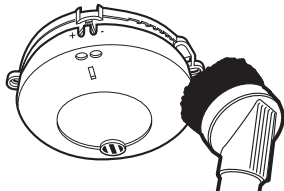
As a minimum your smoke alarm should be cleaned once every 3 months using your vacuum cleaner fitted with the soft brush attachment.

WARNING: Your smoke alarm may false alarm when it is being cleaned using a vacuum cleaner.

IMPORTANT: Do not use solvents or cleaners on your smoke alarm, as they may cause damage to the sensor or circuitry. The unit can be wiped with a slightly damp cloth.

CAUTION: Do not paint the smoke alarm as this may block the openings and prevent smoke from entering the sensor.

Storage in low humidity, and certain transportation conditions, may cause electrostatic charges to build up in the alarm system housing. Although harmless, they may increase the length of time that the horn sounds upon battery insertion or test button operation. The condition may be cleared by gently wiping the inside and outside of the plastic cover with a clean, damp cloth.



DISPOSAL

Waste electrical products should not be disposed of with your other household waste. The alarm is ideally suited for disposal within the waste electronic and electrical equipment (WEEE) recycling scheme. Please recycle where facilities exist. Check with your local authority, retailer or contact our Technical Support team for recycling/disposal advice, as regional variations apply.

WARNING: Do not burn or dispose of in fire.

WARNING: If your alarm is dropped or damaged, as a precaution, it should be removed from the building.

WARRANTY

Sprue Safety Products Ltd warrants to the original purchaser that its enclosed smoke alarm be free from defects in materials and workmanship under normal residential use and service for a period of 5 (five) years from the date of purchase. Provided it is returned with postage prepaid and proof of purchase date, Sprue Safety Products Ltd hereby warrants that during the 5 (five) year period commencing from the date of purchase Sprue Safety Products Ltd, at its discretion, agrees to replace the unit free of charge. The warranty on any replacement SA700 alarm, will last for the remainder of the period of the original warranty in respect of the alarm originally purchased – that is from the date of original purchase and not from the date of receipt of the replacement product. Sprue Safety Products Ltd reserves the right to offer an alternative product similar to that being replaced if the original model is no longer available or in stock. This warranty applies to the original retail purchaser from the date of original retail purchase and is not transferable. Proof of purchase is required.

This warranty does not cover damage resulting from accident, misuse, disassembly, abuse or lack of reasonable care of the product, or applications not in accordance with the user manual. It does not cover events and conditions outside of Sprue Safety Products Ltd's control, such as Acts of God (fire, severe weather etc.). It does not apply to retail stores, service centres or any distributors or agents. Sprue Safety Products Ltd will not recognise any changes to this warranty by third parties.

Sprue Safety Products Ltd shall not be liable for any incidental or consequential damages caused by the breach of any expressed or implied warranty. Except to the extent prohibited by applicable law, any implied warranty of merchantability or fitness for a particular purpose is limited in duration for 5 (five) years.

This warranty does not affect your statutory rights. Except for death or personal injury, Sprue Safety Products Ltd shall not be liable for any loss of use, damage, cost or expense relating to this product or for any indirect, or consequential loss, damages or costs incurred by you or any other user of this product.

