



Buton de incendiu adresabil Unipos FD7150



Descriere generala

Butonul de incendiu FD7150 a fost conceput pentru sisteme de alarma adresabile.

Aceasta unitate este in conformitate cu cerintele si standardele europene :EN54-11:2001/A1:2005, EN54-17:2005/AC:2007.Deschiderea butonului de incendiu sunt aratate in : Poz.1,2 and 3, Fig. 2.Husa de protectie (pos. 2 fig. 2) este un accesoriu necesar FD7150.

Butonul de incendiu manual FD7150 are un izolator incorporat pentru circuitul de semnal.

Comunicarea dintre butonul manual adresabil si panoul se bazeaza pe un protocol UniTalk privat. Indicatorul LED furnizeaza urmatoarele informatii de stare:

- Mod de functionare - LED-ul clipeste scurt timp de 16 secunde;
- Stare alarma - LED-ul clipeste cu lumina continua;
- Izolatorul de scurtcircuit activat - LED-ul clipeste scurt pe o perioada de 1s.

Date tehnice

Voltaj	(10-30) VDC
Curent in stare de repaus	< 390 μ A
Curent in stare de alarma	(3 \pm 1) mA
Instalatia electrica	Prin terminal pentru conectarea firelor cu sectiune transversala (0,5-1,5) mm ²
Index de protectie	IP 40
Temperatura optima de functionare	De la -10°C la plus 55°C
Rezistenta la umiditate	(93 \pm 3)% at 40°C
Dimensiuni	98x96x51 mm
Greutatea	0.150 kg
Material	ABS

INSTALAREA

Pentru a instala acest buton de incendiu, va rog faceti referinta la poz. 4, 5, 6, 7, 8, 9, 10, si 11 sau fig. 3:Diagrama detaliata a firelor este la fig.1

TESTAREA

Butonul este testat ca parte integranta a sistemului de alarma de incendiu adresabil (IFS7002).

1. Procedura de test

1.1. Alimentati butonul de incendiu .

1.2. Tineti apasat butonul manual pana cand aceasta va porni alarma (vezi poz.5, fig 3.1.3). Punctul manual este activat - in "Alarm mode". LED-ul clipeste cu lumina continua.

2. Restarea la "duty mode":

Pentru a reseta butonul de incendiu la "duty mode" , va rog faceti referinta la poz. 2, 4, 5, 6 si 7 ale fig. 3

Cheia de resetare trebuie rotita in sensul acelor de ceasornic pentru a retrage cele doua iconite galbene ale elementului de actionare *poz5, fig 3.*

Inspectia tehnica

1. Insectia pentru butonul de incendiu - saptamanala
2. Verificarea butonului de acces, daca merge sau nu trebuie facuta lunar.

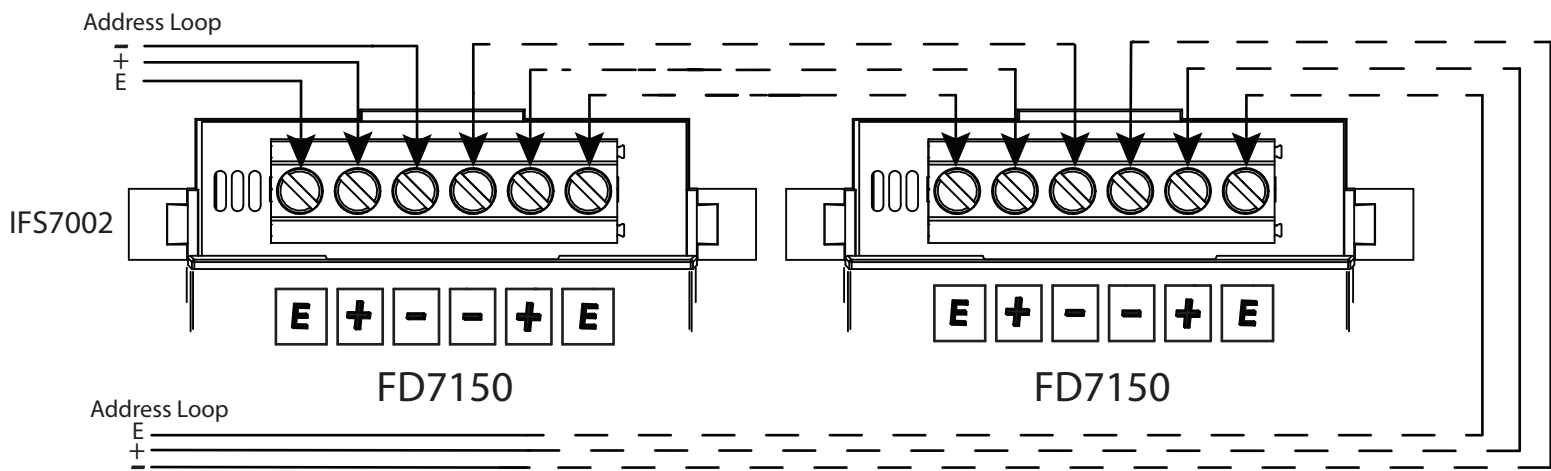


Fig.1

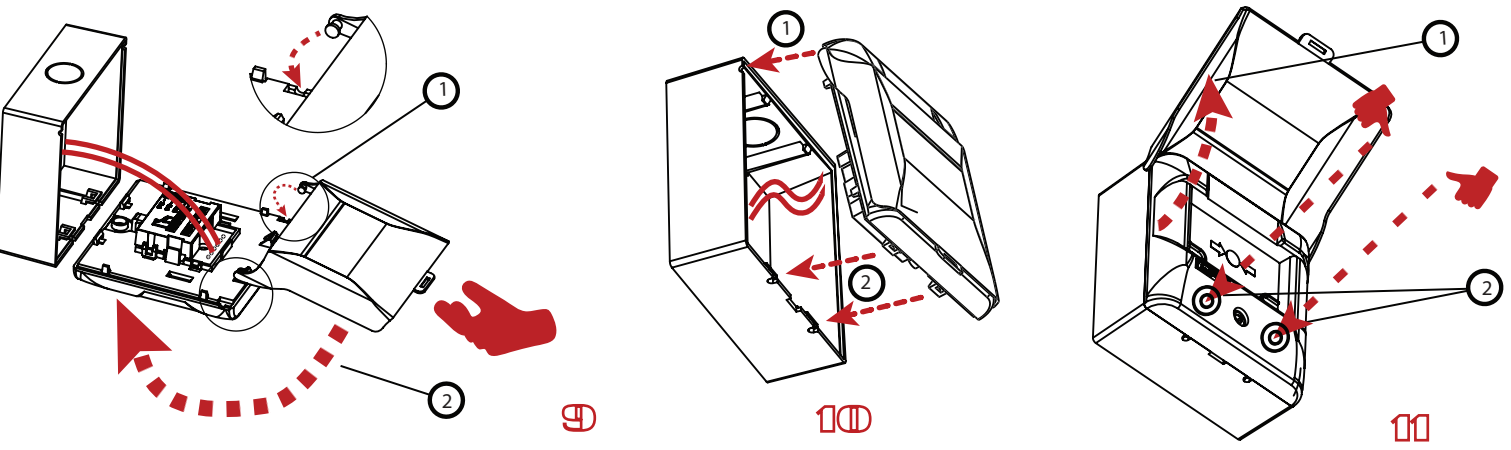
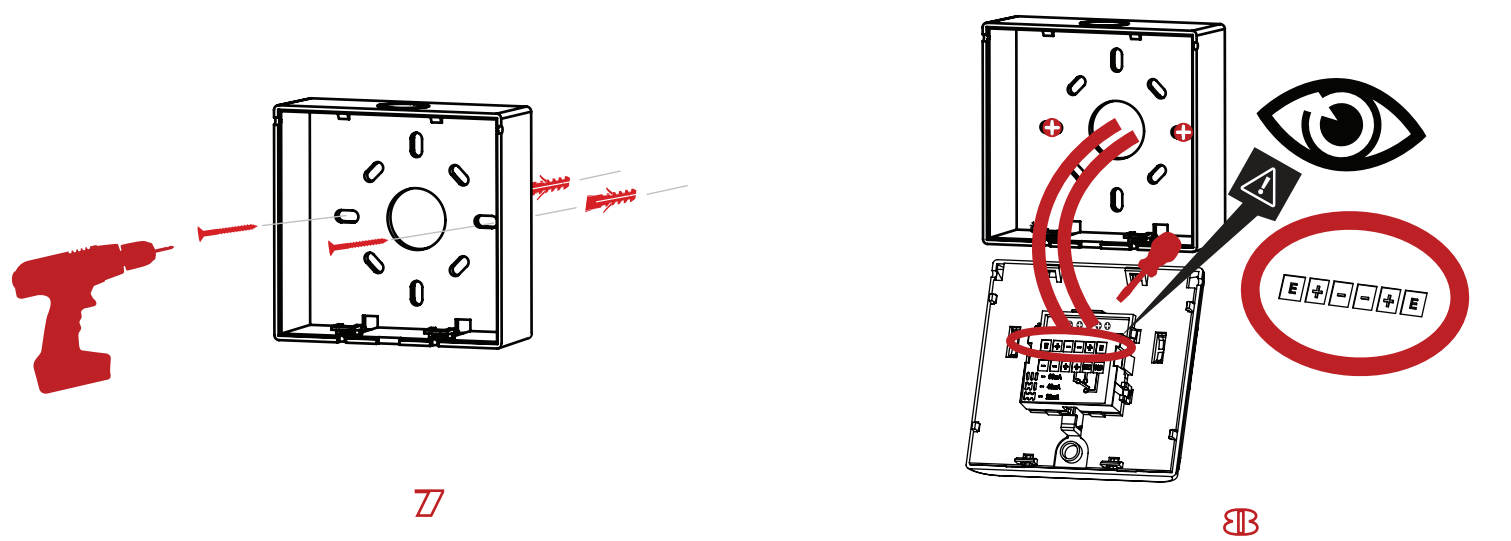
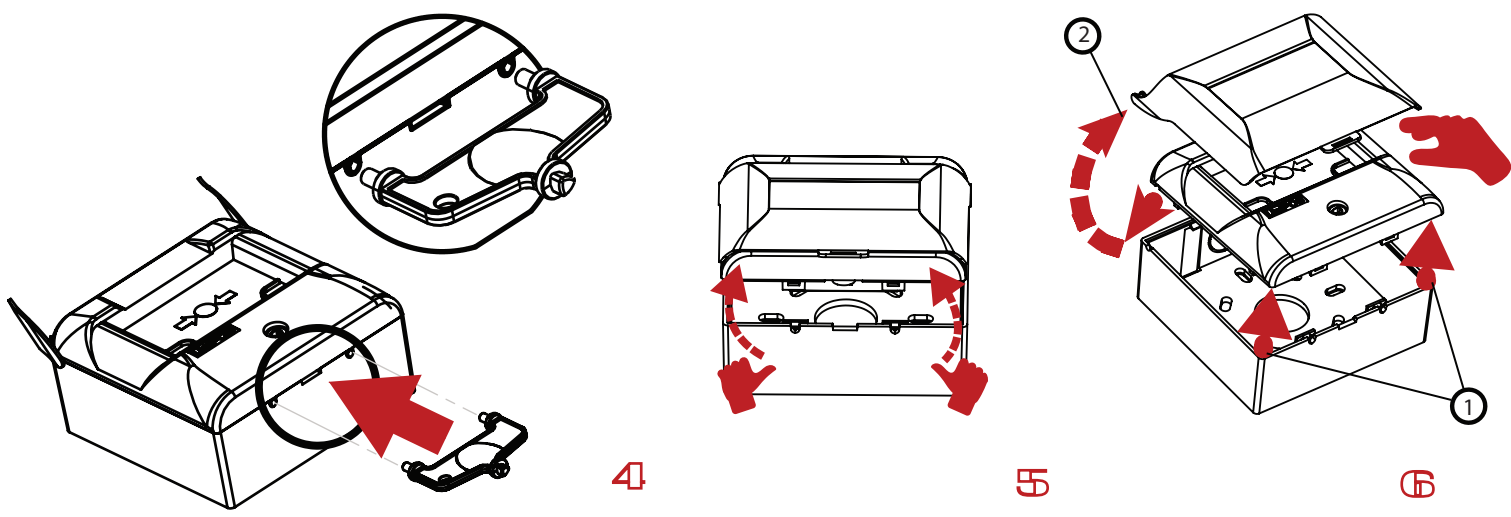
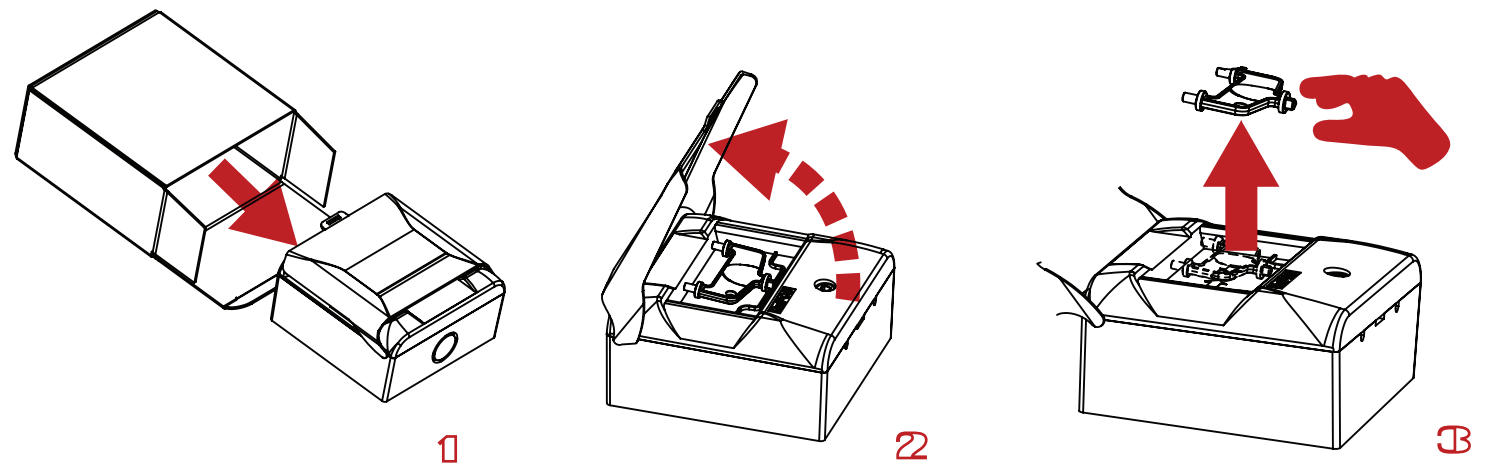
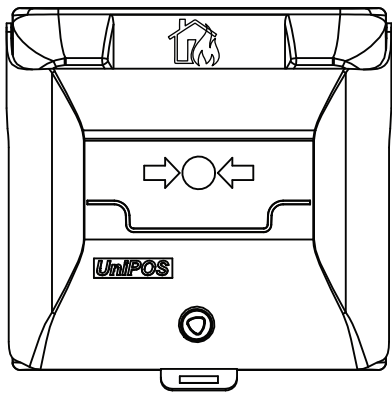
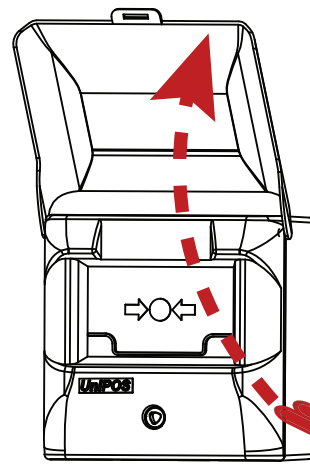


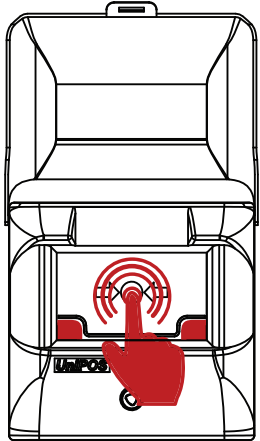
Fig.2



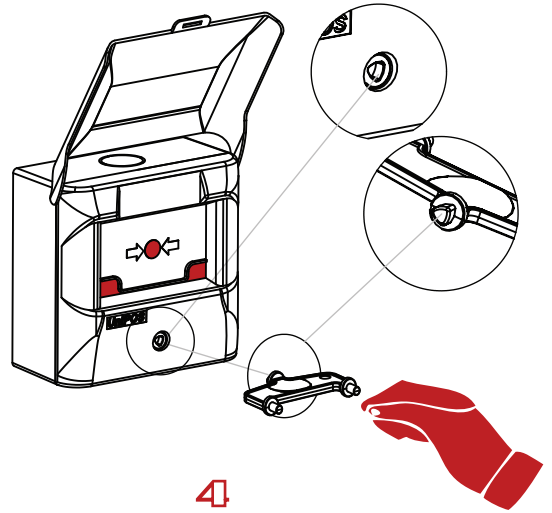
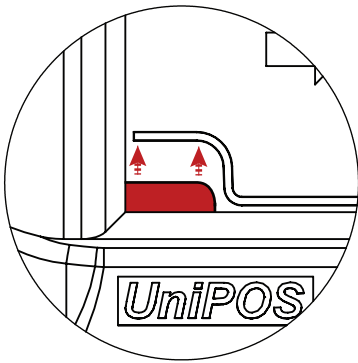
1



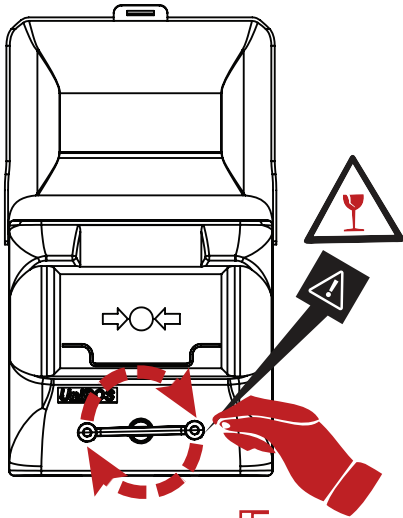
2



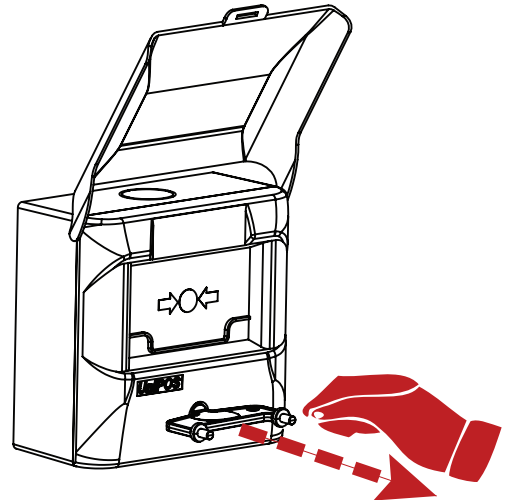
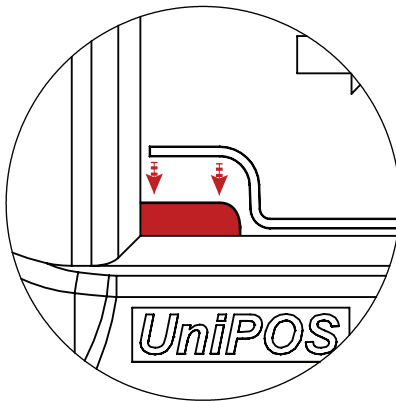
3



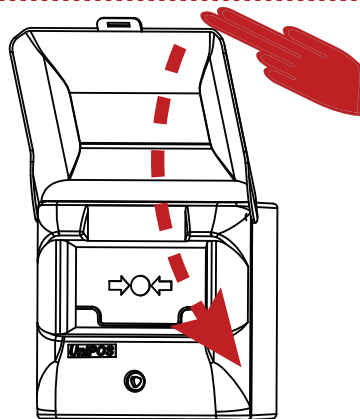
4



5



6



7

Fig.3