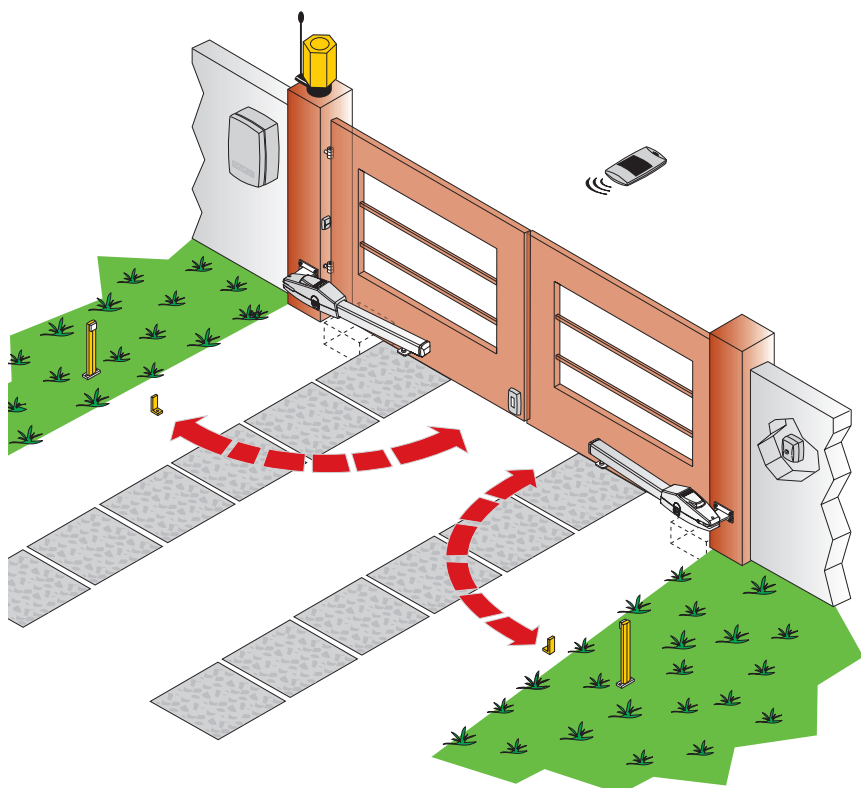
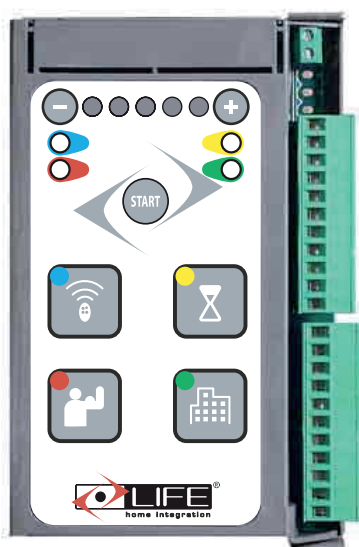


CT2 24 UNI DL 24V

GB

CONTROL UNIT FOR TWO-LEAF GATES

INSTRUCTIONS AND WARNINGS FOR INSTALLATION, USE AND MAINTENANCE



WARNING

Important Safety instructions.

It is important for the safety of persons to follow all instructions.

Save these instructions.

The drive shall be disconnected from its power source during cleaning, maintenance and while replacing parts.

Do not allow children to play with the appliance or its controls, including remotes.

Watch the moving door and keep people away until the door is completely opened or closed.

Take care when operating the manual release since an open door may fall rapidly because of the wind and may cause harm to people or objects.

Frequently examine the installation, in particular check cables, springs and mounting for signs of wear, damage or imbalance.

Do not use if repair or adjustment is needed since a fault in the installation or an incorrectly balanced door may cause injury.

Each month check that security features are working correctly and efficient.

If necessary, adjust and re-check since an incorrect adjustment can present a hazard. If re-adjustment does not Restore the correct operation, contact your authorized service center for assistance.

The automation must not be installed above 2000mt on sea level.

Insert , conforming to the installation regulations, a device that assures a complete disconnection of the power source with a distance of opening contacts in the overvoltage III category.

If the power cable is damaged it must be replaced by the manufacturer or by it's technical service or by a qualified technician in order to prevent any risk.

WARNING:

Automatic door -The door may operate unexpectedly, therefore do not allow anything to stay in the path of the door.

WARNING:

Important safety instructions.

Follow all of the instructions , a wrongful installation may cause damage.

Apply permanently the warning lables against the the entrapment in a clearly visible spot or near fixed command devices.

Apply permanently the manual unlock label near it's control unit.

After the installation , make sure that the mechanism is regulated and that the rotation motor inverts its movement if the door hits an object.

After the installation make sure that the gate structure doesn't obstruct public roads or sidewalks.

After the installation make sure that the safety features work correctly.

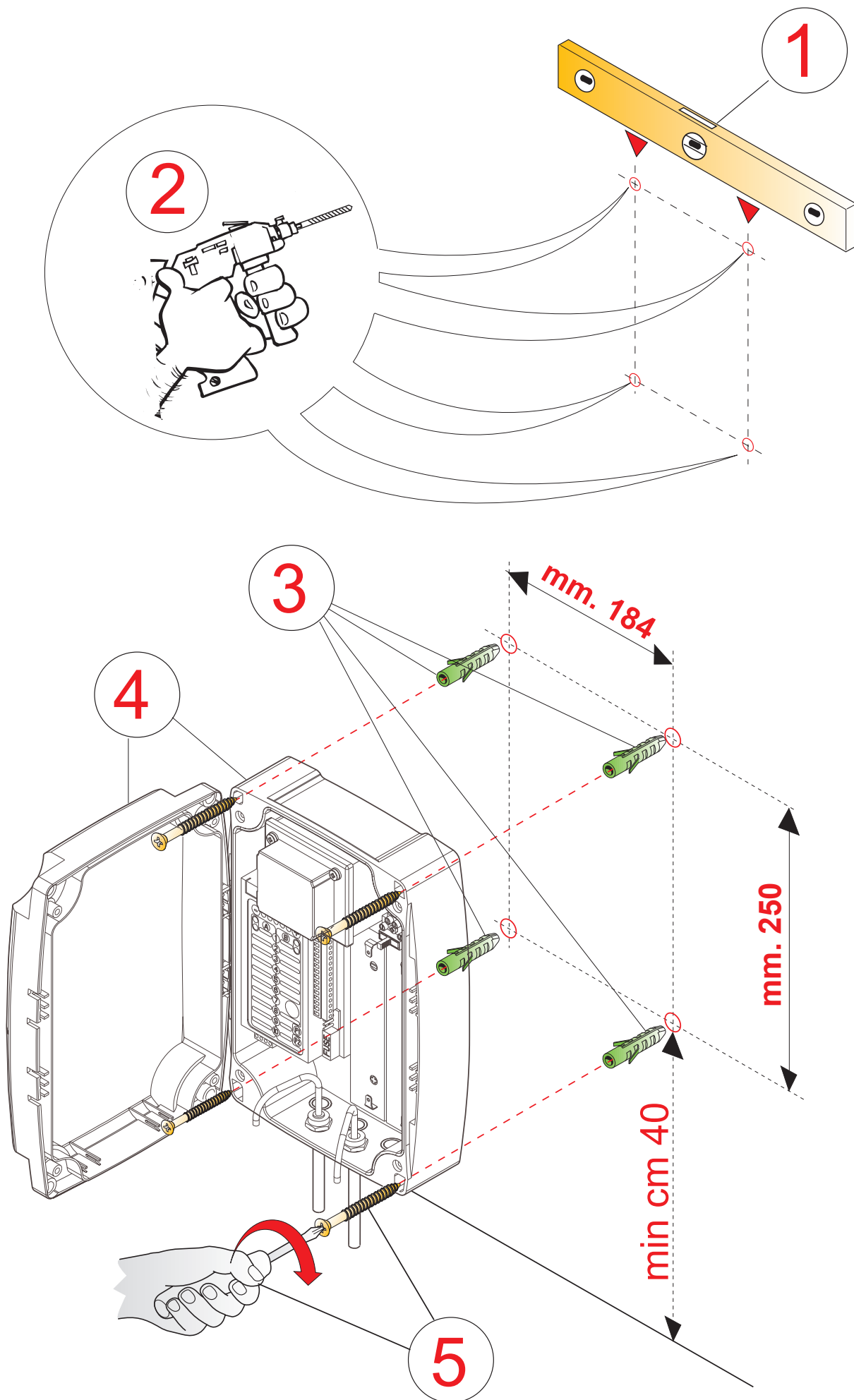
This device can be used by kids older than 8 years of age , by people with disabilities,without experience or necessary knowledge , as long as they are being accompanied or they recived instructions and they can comprehend the dangers of the device .

Kids must not play with the device.

Cleaning and mantainance operations destined to be done by the user must not be done by unattended kids.



GEBOX ASSEMBLY INSTRUCTIONS



1 LINKS AND CONNECTIONS

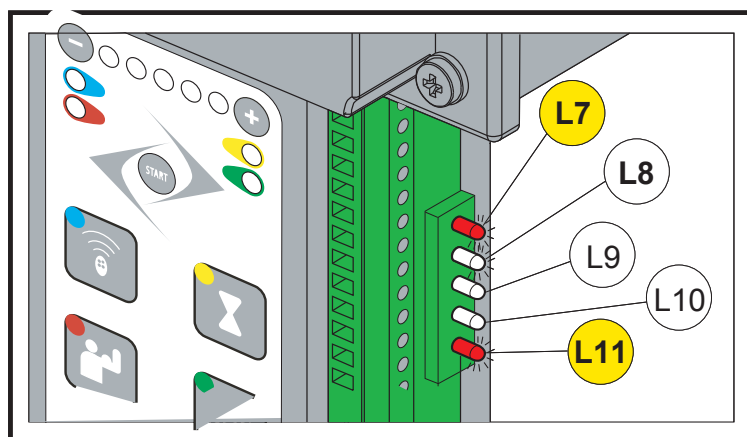
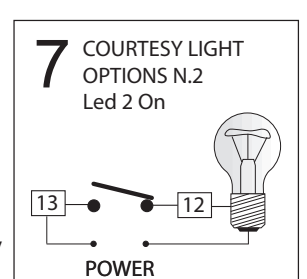
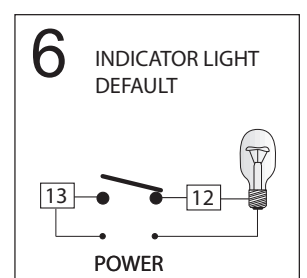
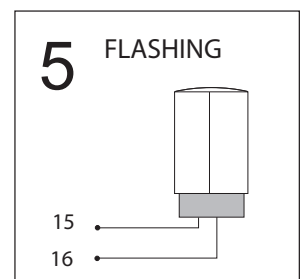
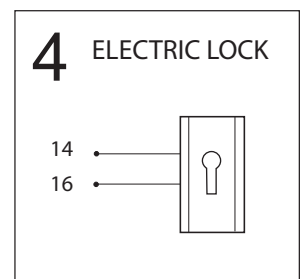
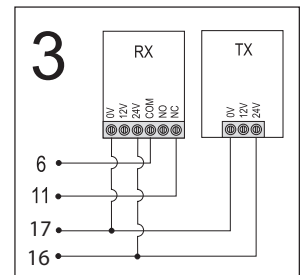
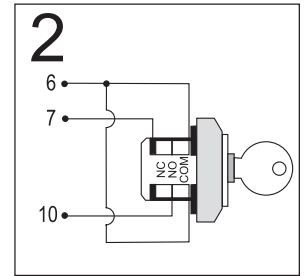
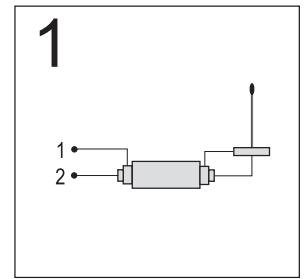
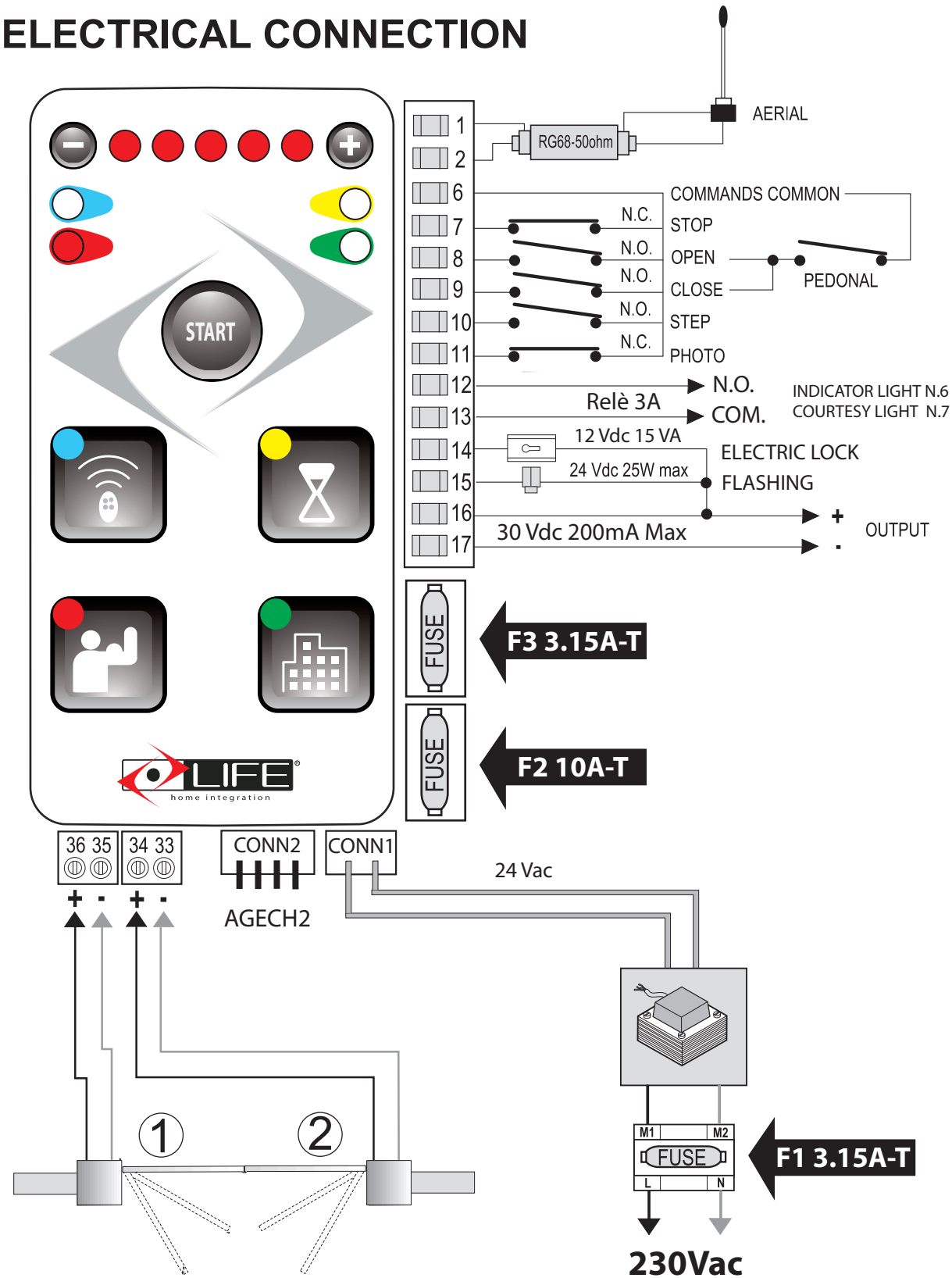
- Before proceeding with the links and connections carefully read what is presented in the PRESCRIPTIONS AND WARNINGS FOR SECURITY and PRESCRIPTIONS AND WARNINGS FOR THE INSTALLATION.
- All of the linking and connecting operations must be performed with the power source disconnected , if the device is not visible a sign must be applied : “ WARNING UNDER MAINTENANCE ”.

1.1 Central Connections

Clamps	Description (check electical scheme , page 5)
1	ANTENNA: Stocking antenna input , use RG58-50 Ohm cable.
2	ANTENNA: Antenna cable input.
6	COMMON COMMANDS: For the inputs: STOP - OPEN - CLOSE - STEP BY STEP - PHOTO.
6 - 7	STOP: Input N.C. Commands the gate's halt. To this can be connected to safety devices such as an emergency arrest button. When released the command does not do an automatic arrest , it is instead necessary to give a new movement command. Leave the bridge in place if no devices are installed.
6 - 8	OPEN: Input N.O. Commands the opening of the gate.
6 - 9	CLOSE : Input N.O. Commands the gate's halt. PHOTO1: With option 1 Led 4 , the input becomes N.C. in order to connect the photocell that acts while in the Closing and Opening phase.
6 - 10	SETP-BY-STEP: Input N.O. Command the gate's actions following this commands : FOUR STEPS MODE : Open,Pause,Close,Pause. SEMI-AUTOMATIC MODE : Open ,Stop,Close,Stop CONDOMINIUM MODE : Open (automatic closing with the active pause time).
6 - 11	PHOTO: Input N.C for photocells and safety devices . While the gate is opening doesn't intervene , while closing it dertermines the inversion of the motion until the complete opening. Leave the bridge open if no devices are installed.
12 - 13	RELE' CONTACT : Clean contact Relè Max 3A , default for the connection to an open gate LED With the activation OPTION 2 Led 2 becomes a command for the courtesy light timed at 3 minutes.
14 - 16	ELECTIC LOCK: Exit 12Vdc for the connection with the electric lock at 12Vdc 15VA; in order to activate select the function from the Options meù n°1 Led n°3
15 - 16	BLINKER: Exit 24 Vdc 25W max to connect the blinker
16	EXIT 30 Vdc : To power various devices, max 200mA.
17	
<p>N.C. = contact normally closed - N.O = contact normally open</p> <p>PEDESTRIAN: The command determines the opening of only one side. Can be given by remote or clamps When using the terminal block a bridge will be obtained and the clamp n°8 will be OPEN , the clamp n°9 will CLOSE this bridge will be connected to a switch at clamp n°6 common. The command PEDESTRIAN from terminl block won't have the OPEN and CLOSE commands.</p>	

Connections bottom of the control unit	
CONN-1	24Vac: Input transformer power
CONN-2	Connection battery charger AGECH-2
33 - 34	- / + Engine 2, if closed opens second.
35 - 36	- / + Engine 1, if closed opens first.

ELECTRICAL CONNECTION



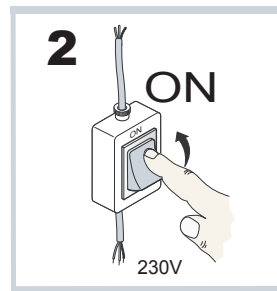
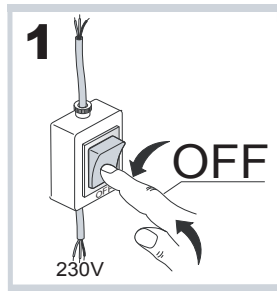
SIGNALS LED

The leds under the terminal block show the entry state .
L7 and L11 are inputs N.C and must be turned on , they turn off when the corresponding input is activated
L8-L9-L10 are inputs N.O. must be turned off and they will automatically turn on when the corresponding input is activated

Energy Saving



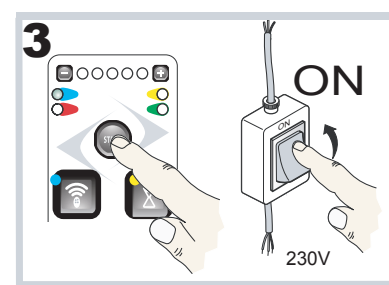
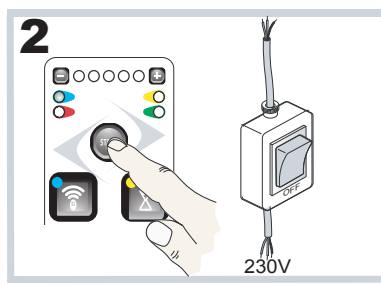
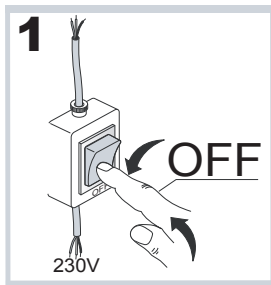
ATTENTION



In order to optimize electrical consumption we introduced the ES function. After 10' from the central programming the Leds of the front panel will turn off and the keyboard will be deactivated. To re-activate the keyboard turn the central unit off and on again

2 CENTRAL UNIT PROGRAMMATION

2.1 TOTAL RESET

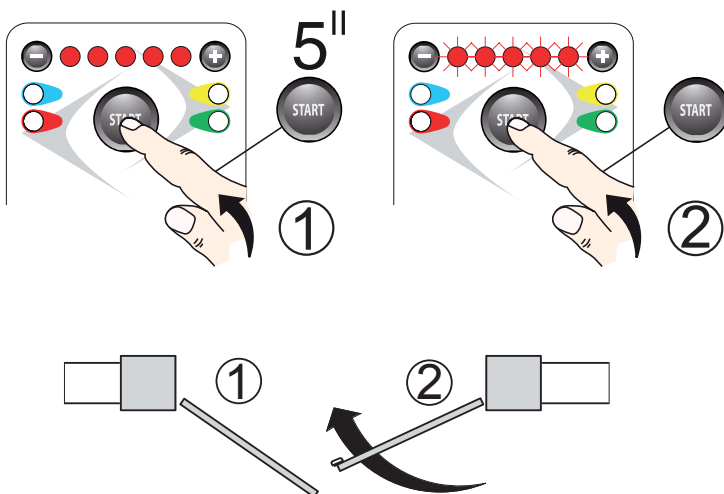


N.B.

In order to totally reset the unit, before giving power, press and keep pushed the **START** button, release after the central unit.

2.2 RUN PROGRAMMATION AND SHUTTERS OFFSET

N.B. In case only one motor is being used connect it with the n°35 and n°36 clamps. Make sure to fix the mechanical limit switches of opening and closing of the automation



- Position the shutters at a 45° angle.
- Press the **START** button for 5", the 5 Leds will first turn on and then they will blink.
- Press **START** the gate will execute this sequence :
 - Closing Shutter 2,
 - Closing Shutter 1,
 - Opening Shutter 1, with offset
 - Opening Shutter 2,
 - Closing Shutter 2, with offset
 - Closing Shutter 1.

As soon as this process is done the two green Leds will start blinking, while the two red Leds will stay on

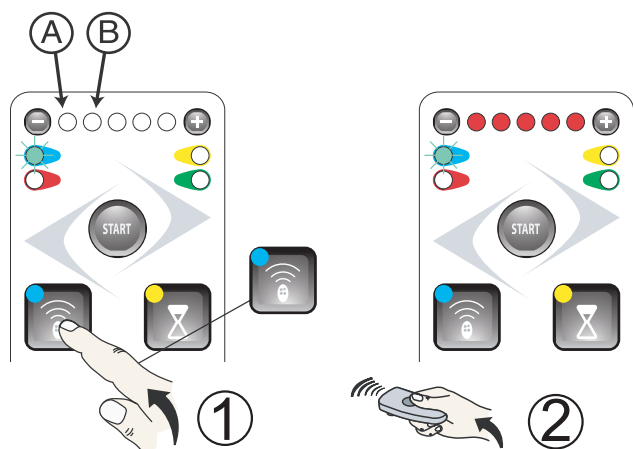
When the programming is done for 10 minutes the **START** button can be used as a STEP command

If the result is not satisfying it is possible to execute a manual programming to define different offsets. Refer to chapter n°7.

3 REMOTE GESTION



The control unit is equipped with an integrated radio receiver with 750 code memory, on a frequency of 433.92 MHz with LIFE Rolling Code and Auto-Code coding

3.1 REMOTE LEARNING





Wait for 20" or press the  button again to anticipate the exit from the programmation mode.

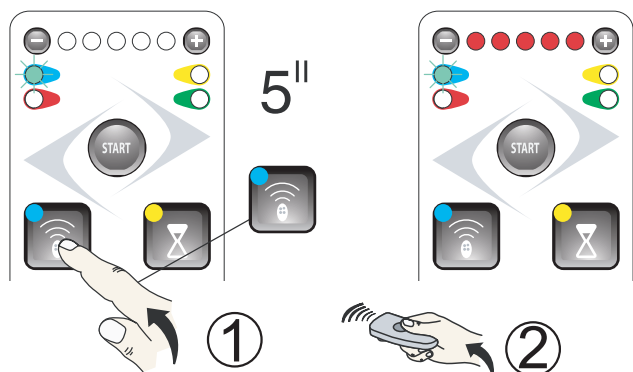
TOTAL OPENING



- Press the  button the left green Led and the [A] Led will turn on.
- Keep the button P1 of the radio control pressed until all five LEDs light up 

SHTTER N°1 PEDESTRIAN OPENING

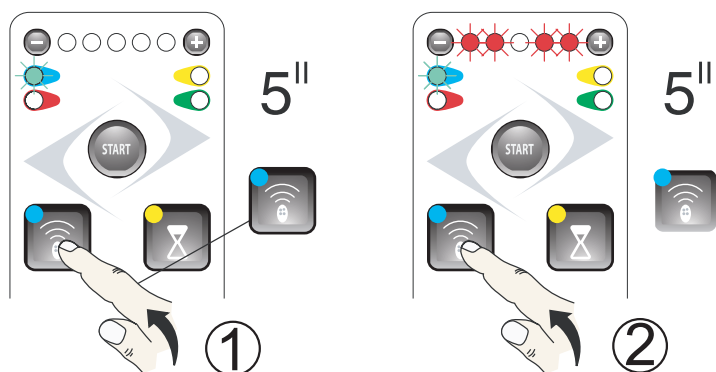
- Press twice the  button and the left green led and the [B] Led will turn on
- Hold down the P2 button of the radio control until all five LEDs light up 




3.2 Removing an already existing remote setting



- Press the  button for 5" , the left green led will firstly turn on and then will start blinking.
- Keep on pressing the remote button until all of the five Leds will light up  the remote setting will be deleted.

3.3 Deleting all of the remotes settings



- Press the  button for 5" , the left green led will turn on and then start blinking.
- Push for 5" the  button and the leds will blink alternately 

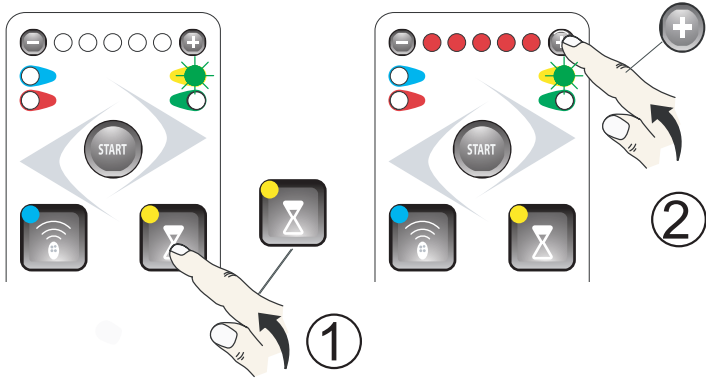
As soon as the Leds will stop blinking all of the remotes settings will be deleted.

4 REGULATIONS AND OPTIONS

4.1 AUTOMATIC CLOSURE

An automatic closure is activated after a set PAUSE TIME.


4.2 AUTOMATIC CLOSURE



By pressing \ominus and \oplus you can set the various values for the PAUSE TIME

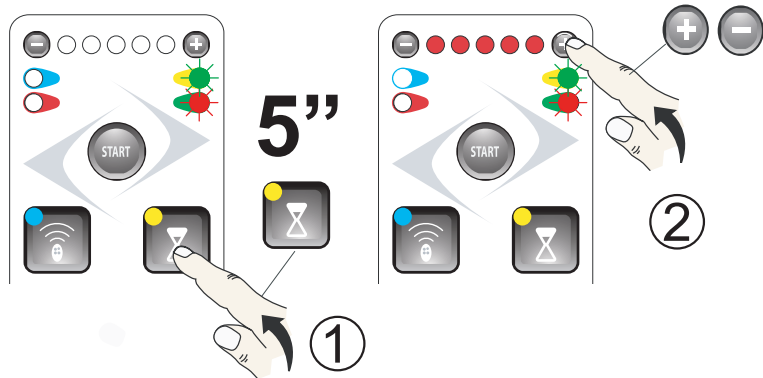
Wait 20" or press the  button again in order to anticipate the exit from programming mode.

Work cycle:
OPEN - PAUSE - CLOSE - PAUSE


- a) Press the  button the green right Led turns on
- If none of the leds $\ominus \circ \circ \circ \circ \oplus$ is turned on the automatic closure is not active , press the \oplus button to activate it .
 - If at least one of the leds $\ominus \bullet \circ \circ \circ \oplus$ is on the automatic closure is activated, in order to deactivate it press the \ominus button until all of the Leds are off.

LEDS ON	PAUSE TIME
$\ominus \circ \circ \circ \circ \oplus$	CHIUSURA NON ATTIVA
$\ominus \bullet \circ \circ \circ \oplus$	5 s
$\ominus \bullet \bullet \circ \circ \oplus$	10 s
$\ominus \bullet \bullet \bullet \circ \oplus$	30 s
$\ominus \bullet \bullet \bullet \bullet \circ \oplus$	60 s
$\ominus \bullet \bullet \bullet \bullet \bullet \oplus$	120 s

4.3 ADJUSTMENT TIME OF DECELERATION



Wait 20" or press the  button again in order to anticipate the exit from programming mode.

- a) Press the  for 5" the Led green and red on the right will turn on:

By pressing \ominus and \oplus you can adjust the value of the DECELERATION TIME

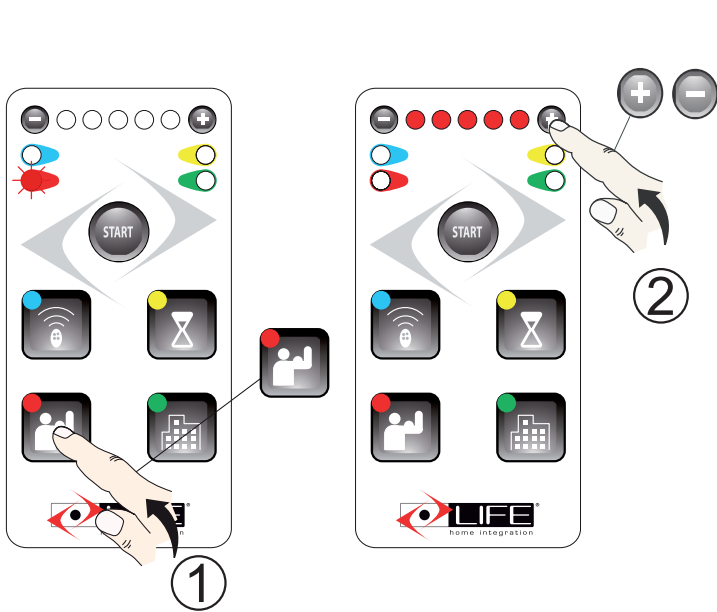
LEDS ON	DECELERATION TIME
$\ominus \circ \circ \circ \circ \oplus$	MINIMUM
$\ominus \bullet \circ \circ \circ \oplus$	
$\ominus \bullet \bullet \circ \circ \oplus$	
$\ominus \bullet \bullet \bullet \circ \oplus$	DEFAULT
$\ominus \bullet \bullet \bullet \bullet \circ \oplus$	
$\ominus \bullet \bullet \bullet \bullet \bullet \oplus$	MAXIMUM

ATTENTION:

The deceleration CAN'T be completely eliminated , in this phase the limit switch's push force will determine the Stop in the motor's run.

5 SPEED AND SENSIBILITY

5.1 ADJUSTING SPEED

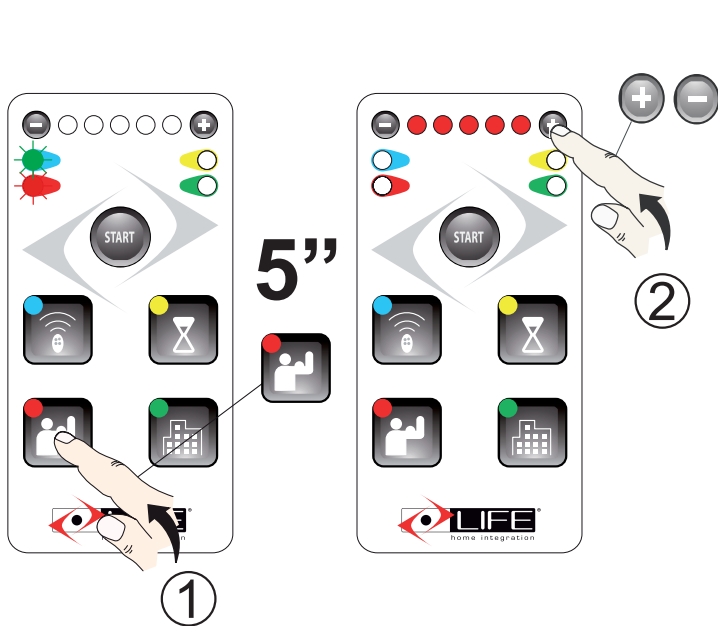


- a) Press the button and left red led will turn on:
By pressing \ominus or \oplus the speed can be adjusted.

LED ON	SPEED
\ominus ○ ○ ○ ○ ○ \oplus	MINIMUM 75%
\ominus ● ○ ○ ○ ○ \oplus	80%
\ominus ● ● ○ ○ ○ \oplus	85%
\ominus ● ● ● ○ ○ \oplus	DEFAULT 90%
\ominus ● ● ● ● ○ \oplus	95%
\ominus ● ● ● ● ● \oplus	MAXIMUM 100%

Wait 20" or press the button again to anticipate the exit from the programming mode.

5.2 MOTOR SENSITIVITY ADJUSTMENT



- a) Press the button for 5" the green and red Led on the left will turn on.
By pressing \ominus or \oplus the sensitivity can be adjusted .

LED ON	SENSITIVITY
\ominus ○ ○ ○ ○ ○ \oplus	MINIMUM
\ominus ● ○ ○ ○ ○ \oplus	
\ominus ● ● ○ ○ ○ \oplus	
\ominus ● ● ● ○ ○ \oplus	DEFAULT
\ominus ● ● ● ● ○ \oplus	
\ominus ● ● ● ● ● \oplus	MAXIMUM



Wait 20" or press the button again to anticipate the exit from the programming mode.

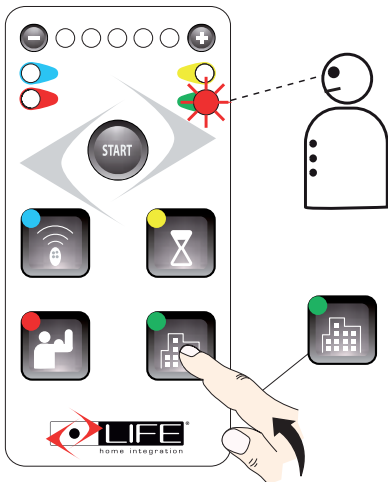
ATTENZIONE:

Based on the gate's structure and on its usage parameters such as sensitivity and speed must be setted accordingly to the laws of the country.

6 OPTIONS MENU

6.1 OPTIONS 1



Press the  button in order to enter inside the OPTIONS MENU 1 , press in sequence the  button to advance in the selection , the blinking led will indicate the position , with the ⊕ button it will be activated Red fixed Led , with the ⊖ button it is deactivated.

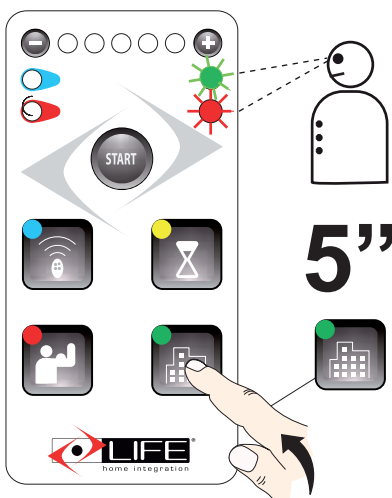


LED ON	OPTIONS 1
⊖ ○ ○ ○ ○ ○ ⊕	No active function.
⊖ ● ○ ○ ○ ○ ⊕	Condominium: Command Step Open only.
⊖ ● ● ○ ○ ○ ⊕	Mode: OPEN-STOP-CLOSE-STOP.
⊖ ● ● ● ○ ○ ⊕	Electric lock activation.
⊖ ● ● ● ● ○ ⊕	The input CLOSE becomes PHOTO1.
⊖ ● ● ● ● ● ⊕	The activation of PHOTO anticipates the closure.

Wait for 20" or press the  again to exit programming mode.

6.2 OPTIONS 2

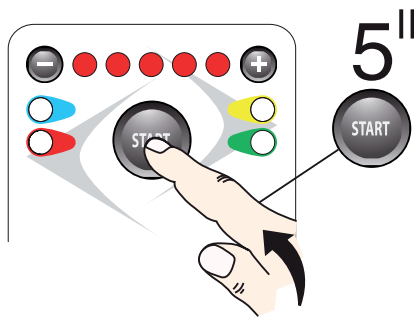
Press the  button for 5" in order to enter the OPTION MENU 2 , press in sequence the  button to advance in the selection the led blinking shows the position and with the ⊕ button it is activated , fixed red Led, with the ⊖ button it deactivates .




LED ACCESI	OPZIONI 2
⊖ ○ ○ ○ ○ ○ ⊕	No active function.
⊖ ● ○ ○ ○ ○ ⊕	Faster slowing-down speed.
⊖ ● ● ○ ○ ○ ⊕	The exit Relè 12-13 becomes a COURTESY LIGHT
⊖ ● ● ● ○ ○ ⊕	Delay of safety interventions during movement.
⊖ ● ● ● ● ○ ⊕	Funcioning with PRESENT MAN.
⊖ ● ● ● ● ● ⊕

Wait for 20" or press the  again to exit programming mode.

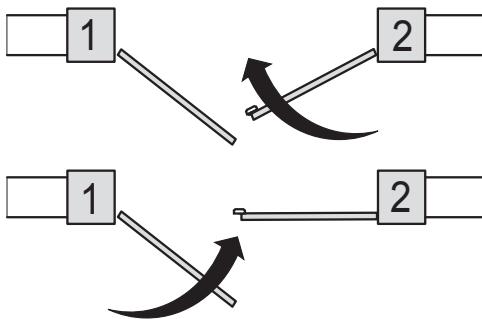
7 MANUAL PROGRAMMING



Manual programming can be done with a button connected to terminals 6 - 10 (Step-by-Step) or with radio control previously memorized, page 7 cap.3.1. Position the motors at 45 °.

Press  for 5 seconds , the 5 leds will light up and then start blinking.

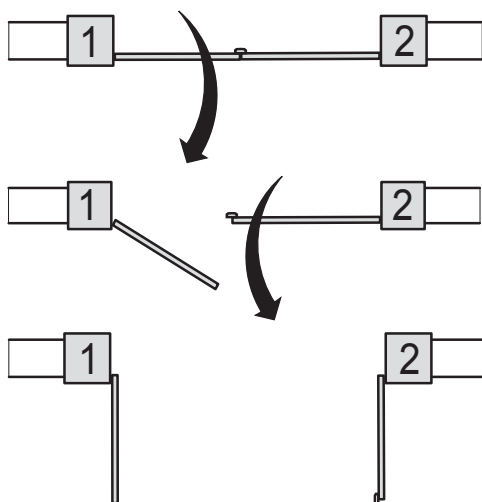
7.1 CLOSING FINISHES LEARNING



During the flashing of the 5 LEDs give a command of Step by step the leaf [2] must move first in closing, when he arrives at the stop he has to stop and the Led of the Right goes on with fixed red light.

Give a second Step-by-Step command the leaf [1] must move in closing, when it comes in batting it must stop and the Left LED lights up with a fixed red light.

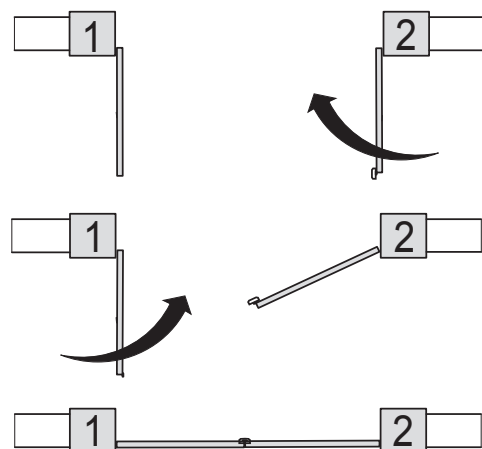
7.2 LEARNING OFFSET AND FINISHES



Give a Step-by-Step command the leaf [1] opens, al reaching the point where you want to open also the leaf [2] give a further step-by-step command.

The two wings now proceed in opening until they reach the respective mechanical stops, the two red LEDs of left and right they remain in red light.

7.3 LEARNING CLOSING OFFSET



Give a Step-by-Step command the leaf [2] closes, al reaching the point where you want to close also the leaf [1] give a further step-by-step command.

The two doors proceed now in closing until they reach the respective mechanical stops, the two red LEDs of left and right they remain in red light.

The automation is now programmed in semi-automatic mode. If the result obtained is not satisfactory, perform the reset the control panel and restart from point 7.



Address: Via Sandro Pertini,3/5 31014 COLLE UMBERTO (TV) Italia

Telephone: **+ 39 0438 388592**

Telefax: **+ 39 0438 388593**

http **www.homelife.it**

e-mail: **info@homelife.it**

